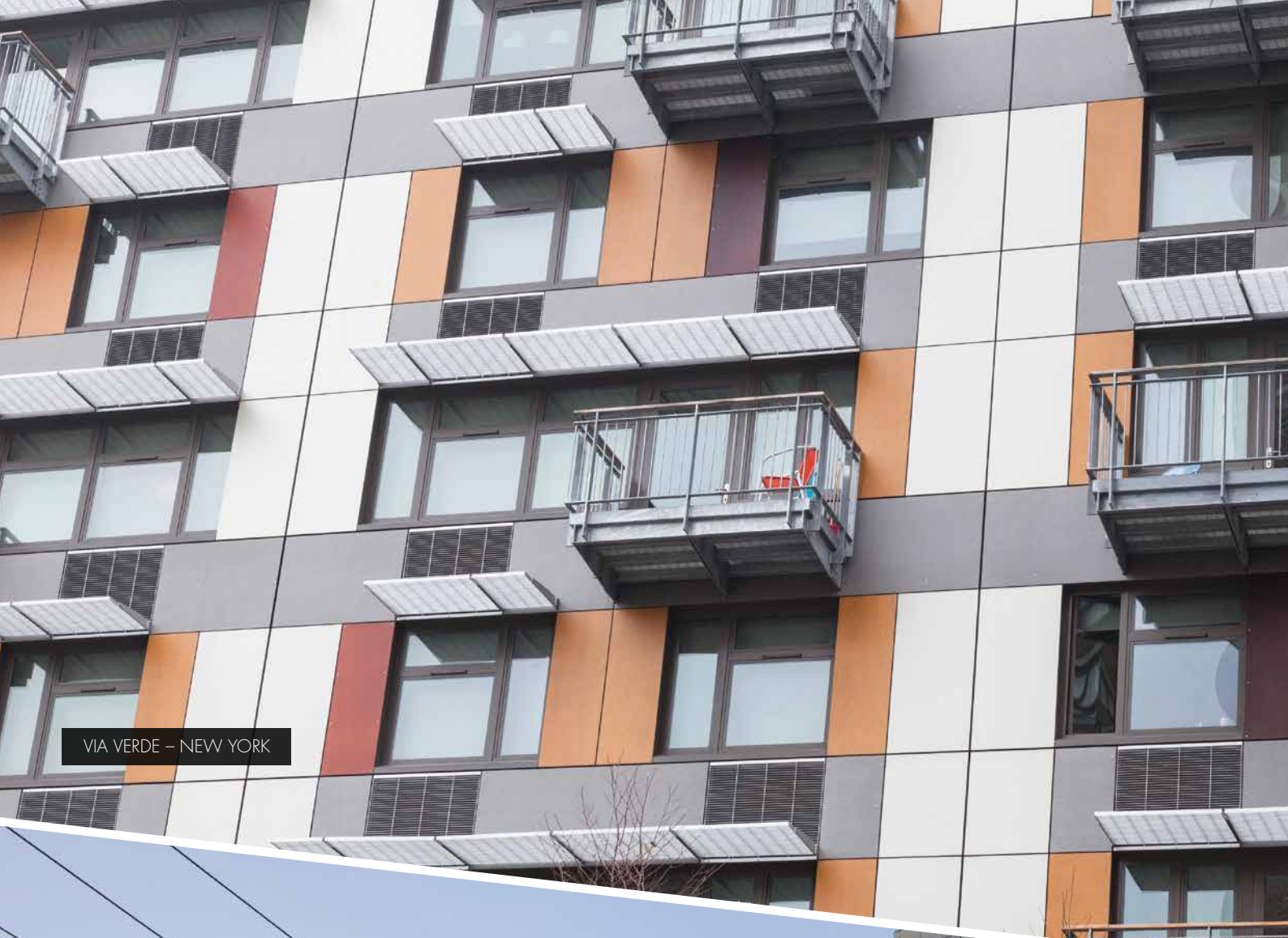


# Unitised Rainscreen Facades

High performance, engineered building envelope solutions.

HOTEL GANSEVOORT – MEATPACKING DISTRICT, NEW YORK





VIA VERDE – NEW YORK



RUTGERS UNIVERSITY – NEW JERSEY





## Specify high performance facades with confidence

Rainscreens, also known as ventilated or double skinned facades have been recognised by architects around the globe as a major technical improvement, providing better weather-tightness and building performance.

Until now, maximising these benefits has relied heavily on the quality of installation with somewhat difficult buildability cited as a key reason for the installation of more traditional façade systems.

For the first time in Australia, a rainscreen system is now available that delivers the high performance that architects demand with excellent buildability that delivers real benefits during construction.

Through a collaboration with New York exterior fabrication specialist ISLAND, CSR Inclose™ has developed a unitised rainscreen façade system using proven international technology with Australian manufacturing reliability.

### A unitised building envelope solution

CSR Inclose™ designs, engineers and executes high performance, precision fabricated, unitised systems that meet or exceed today's building codes for fire, thermal, acoustic and weather performance.

The unitised façade is achieved through the use of megapanel that can be up to 12 metres in length.

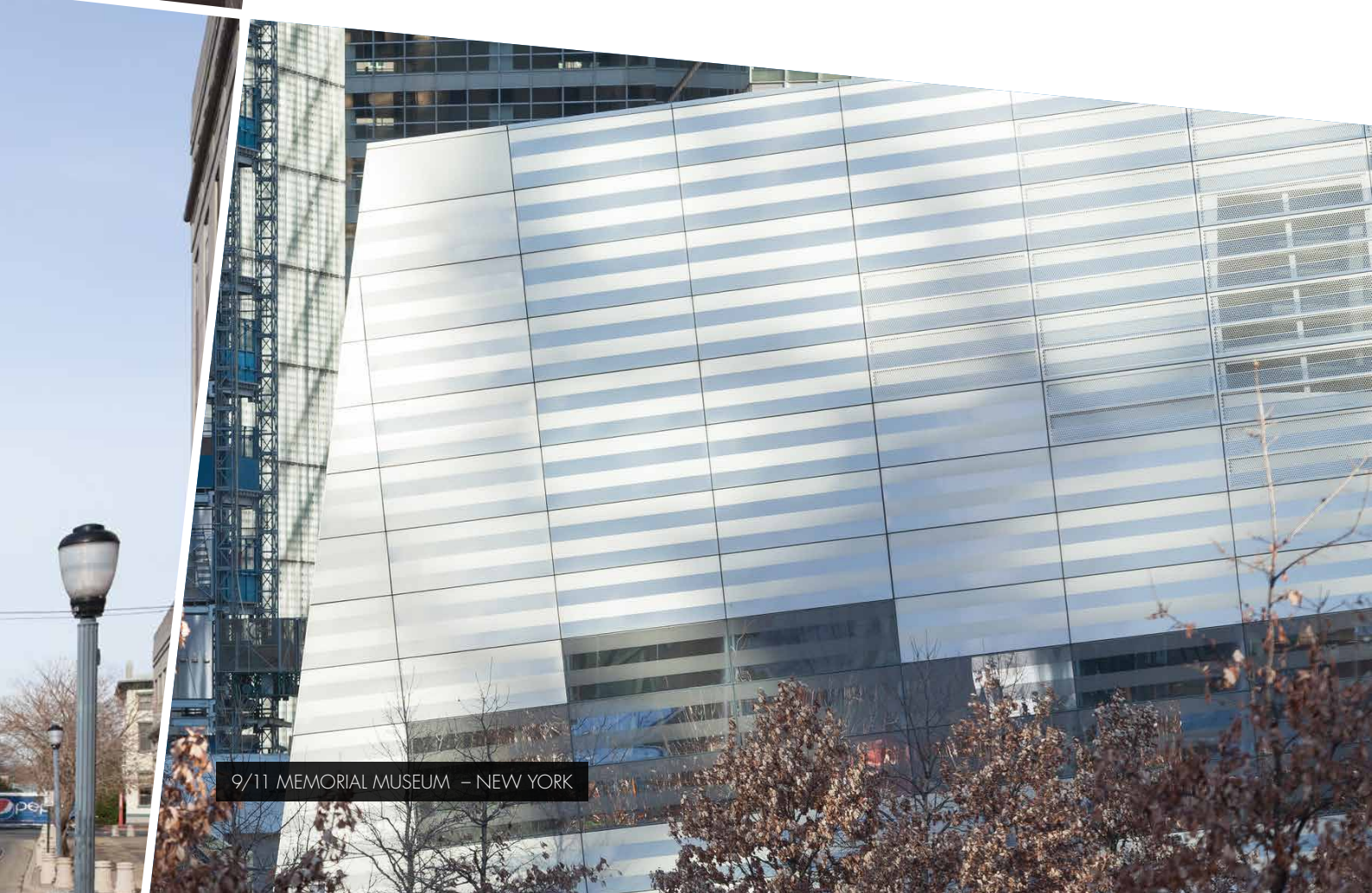
Your choice of cladding material is pre-installed and the panels are delivered to site and craned into position with no requirement for fixing or sealing from outside.

We have leveraged state of the art curtain wall technology to develop a perimeter interface system that does not rely on wet seals. Fully dry set gasket type interfaces are used, eliminating the need for maintenance of heavy wet seals

at panel to panel interfaces, and more importantly providing a watertight enclosure as each individual floor is enclosed.

Each megapanel solution consists of:

- Light gauge steel frame
- Continuous insulation
- Integrated glazing
- Dry set gasket interface
- Architectural cladding flexibility



# Delivering the total building envelope

CSR Inclose™ provides a complete, turnkey service to ensure your project comes together smoothly.

## Design

We will work with you through the design process to identify and remedy issues prior to construction to minimise the potential impact on costs and the construction schedule.

Bringing on Inclose as a project partner in a design assist capacity can save significant time and money.



## Engineering and certification

Inclose provides digital integration of structural engineering and we work with architects and contractors to develop ideal panel layouts to maximise efficiencies.

Full testing for certification is managed off site to ensure finished project compliance.

We provide a high level of engineering transparency to provide knowledge of our systems to all project stakeholders.



## Off-site fabrication

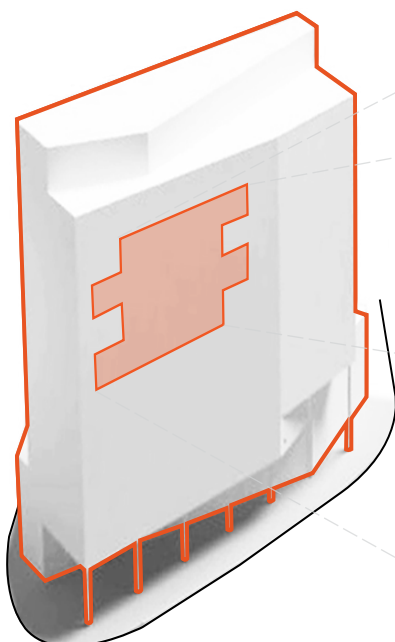
Inclose prefabricates and assembles panels within a highly structured assembly workflow that adheres to strict quality control protocols.

Offsite construction allows performance testing of all conditions before the panels are installed on site.



## Installation

We will manage delivery and full installation of panels to ensure a smooth and efficient install in line with the project schedule.





# Key benefits of Inclose rainscreens

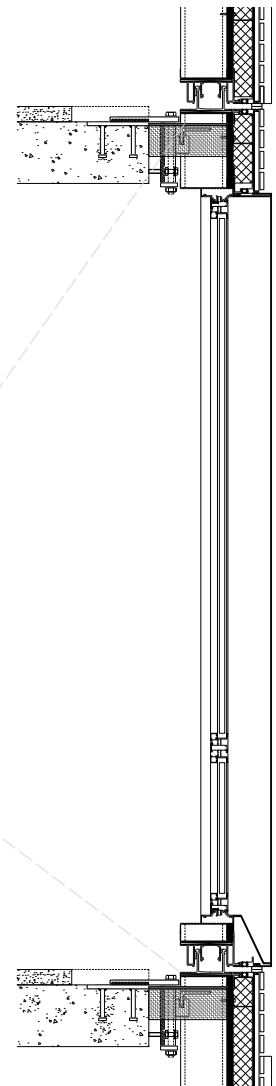
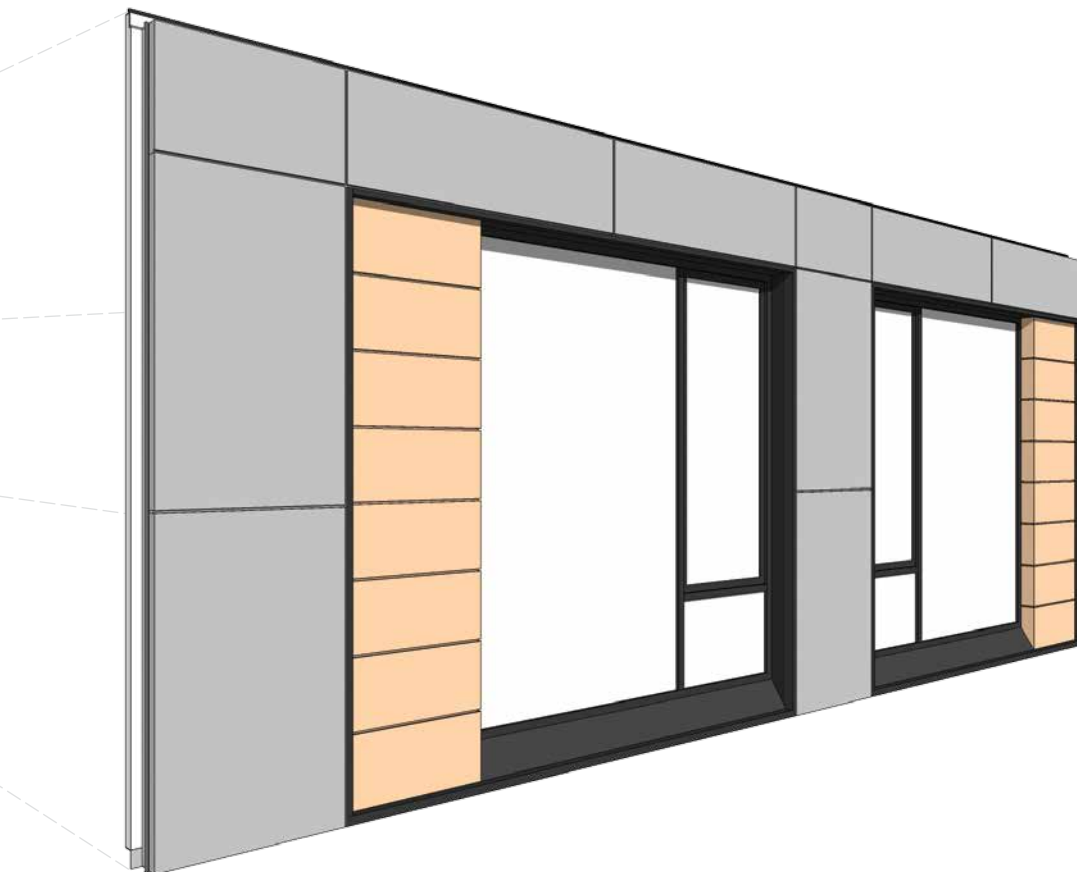
- Increased speed of enclosure allowing earlier interior finishing
- Greater site efficiency with less trades to manage
- Reduced safety, weather and quality risks
- Single source building enclosure with one set of façade documents
- Supply chain guaranteed through local manufacture
- Comprehensive façade warranty

## Installed and Enclosed

All of our façade panels are delivered and installed with glazing, weather seal and exterior finish attached, which can reduce requirements for scaffolding.

Once a floor is ringed with the Inclose façade megapanel it is weather sealed and ready to accept interior finishes. Each panel is independently attached to the structure with a dynamic attachment system to maintain accuracy and cater for building movement.

The simple installation system provides rapid installation that can enclose the building faster than traditional construction methods.



# An international technology alliance

A technology and manufacturing assistance alliance has been secured with Island Exterior Fabricators LLC (ISLAND) in New York. ISLAND is a privately owned firm that has pioneered panelised façade design for over 15 years.

ISLAND has extensive experience in design, engineering, fabrication and installation with many different building enclosure systems and building types.

Inclose is a CSR business formed to deliver the benefits of its global technology and design alliance with New York Façade experts ISLAND.

**Inclose**  
Unitised Rainscreen Facades

**ISLAND**  
Exterior Fabricators

---

Inclose is owned and supported by CSR, the name behind many of Australia's most trusted and recognised building products and systems.

CSR is committed to delivering to its customers the latest technology and the best possible building systems. CSR continually invests in innovation and the expansion into advanced manufacturing capabilities.

Through our continuing alliance with ISLAND, we are able to harness a wealth of international experience and design expertise. This, combined with the Australian construction industry knowledge from CSR, provides architects, engineers and builders with a high level of specification and construction security.

For more information on rainscreen façade systems from Inclose call 1800 023 360 or email [Inclose@csr.com.au](mailto:Inclose@csr.com.au).

[www.inclosedesign.com.au](http://www.inclosedesign.com.au)

Triniti 3, 39 Delhi Road, North Ryde, NSW, 2113  
CSR Building Products ABN 55 008 631 356

