



ABN 90 000 001 276

## Online Meeting Guide 2020

### Getting Started

If you choose to participate in CSR's Annual General Meeting online you will be able to view a live webcast of the meeting, ask the Directors questions online and submit your votes in real time. To participate in this way, you will need to either:

a) Visit <https://web.lumiagm.com> on your smartphone, tablet or computer. You will need the latest version of Chrome, Safari, Internet Explorer 11, Edge or Firefox. Please ensure your browser is compatible; or

b) Download the Lumi AGM app from the Apple App or Google Play Stores by searching for Lumi AGM.

# Meeting ID: 376-871-836

To log in, you will need the following information:

#### Australian Residents

Username (SRN or HIN) and Password (postcode of your registered address)

#### Overseas Residents

Username (SRN or HIN) and Password (three-character country code) e.g. New Zealand - NZL; United Kingdom - GBR; United States of America - USA; Canada - CAN. A full list is provided at the end of this guide.

#### Appointed Proxy

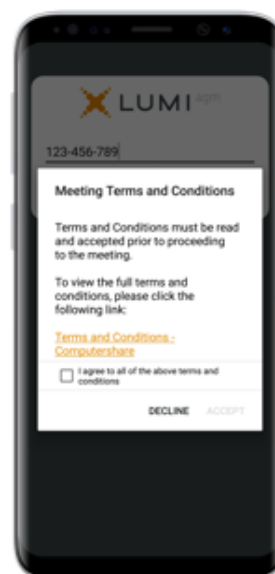
To receive your username and password, please contact Computershare Investor Services on +61 3 9415 4024 during the online registration period which will open 1 hour before the start of the meeting.

Online registration will open 1 hour before the start of the meeting

**1** To participate in the meeting, you will be required to enter the unique 9 digit Meeting ID provided above.



**2** To proceed into the meeting, you will need to read and accept the Terms and Conditions.



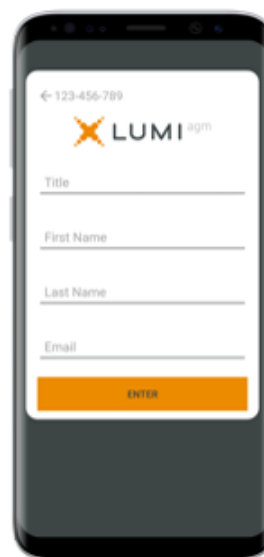
OR



3 To register as a securityholder, select 'I have a login' and enter your username (SRN or HIN) and password (postcode or country code).



3a If you are a visitor, select 'I am a guest' and enter your name and email details. Please note, visitors will not be able to ask questions or vote at the meeting.



4 Once logged in, you will see the home page, which displays the meeting documents and information on the meeting. Icons will be displayed in different areas, depending on the device you are using.





The broadcast bar allows you to view and listen to the proceedings

Home page icon, displays meeting information

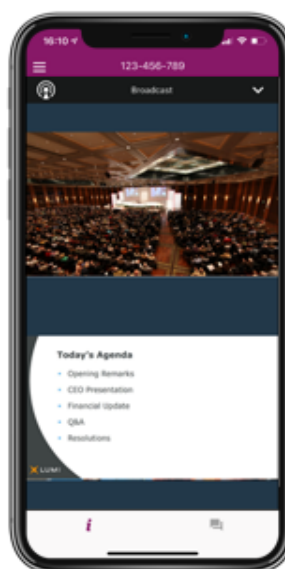
Questions icon, used to ask questions

Voting icon, used to vote. Only visible when the chairman opens poll

5 View the webcast


To view proceedings you must tap the broadcast arrow  on your screen. Video and/or slides of the meeting will appear after approx. 30 seconds\*. Toggle between the up or down arrow  to view another screen.

(\*Dependant on the speed of your internet)



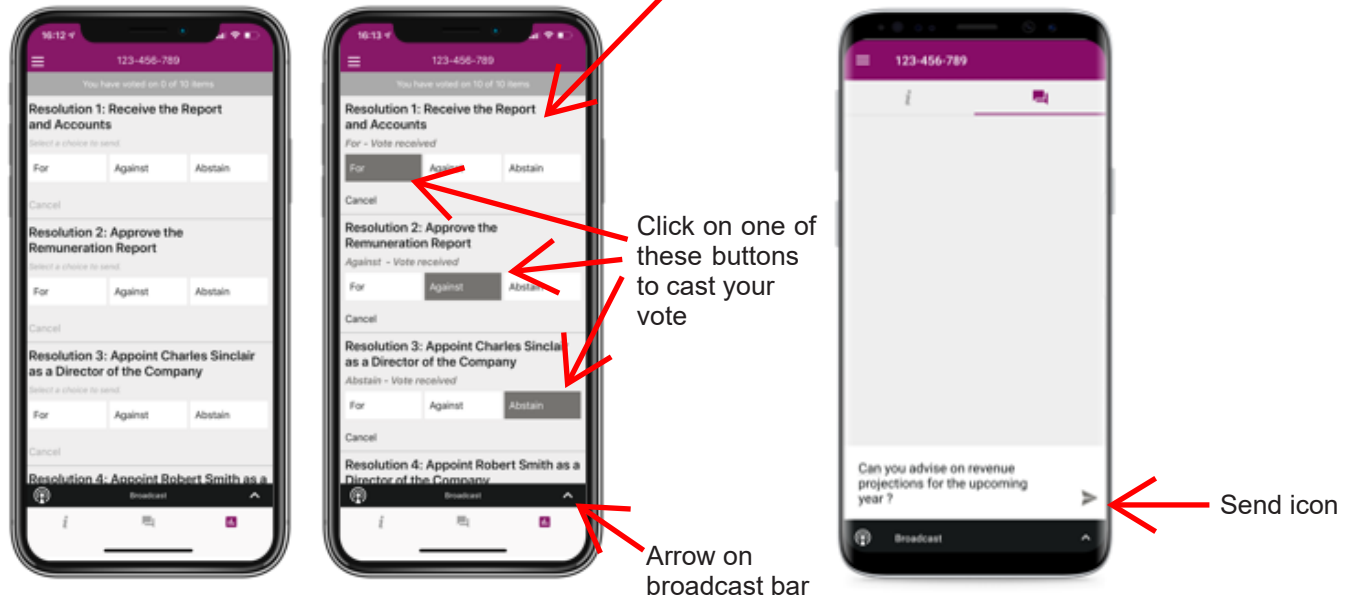
## 6 To Vote

When the Chairman declares the poll open:

- A voting icon  will appear on your device and the Meeting Resolutions will be displayed.
- To vote tap one of the voting options. Your response will be highlighted.
- To change your vote, simply press a different option to override.

The number of items you have voted or yet to vote on, is displayed at the top of the screen.

Votes may be changed up to the time the chairman closes the poll.



On some devices, to vote, you may need to minimise the webcast by selecting the arrow in the broadcast bar, audio will still be available. To return to the webcast after voting, select the arrow again.

## For Assistance

If you require assistance prior to or during the Meeting, please call +61 3 9415 4024



# COUNTRY CODES

Select your country code from the list below and enter it into the **password** field.

<b>ABW</b> ARUBA	<b>CPV</b> CAPE VERDE	<b>ISM</b> BRITISH ISLES	<b>NPL</b> NEPAL	<b>TKM</b> TURKMENISTAN
<b>AFG</b> AFGHANISTAN	<b>CRI</b> COSTA RICA	<b>ISR</b> ISRAEL	<b>NRU</b> NAURU	<b>TLS</b> EAST TIMOR
<b>AGO</b> ANGOLA	<b>CUB</b> CUBA	<b>ITA</b> ITALY	<b>NZL</b> NEW ZEALAND	DEMOCRATIC REP OF
<b>AIA</b> ANGUILLA	<b>CXR</b> CHRISTMAS ISLAND	<b>JAM</b> JAMAICA	<b>OMN</b> OMAN	<b>TMP</b> EAST TIMOR
<b>ALA</b> ALAND ISLANDS	<b>CYM</b> CAYMAN ISLANDS	<b>JEY</b> JERSEY	<b>PAK</b> PAKISTAN	<b>TON</b> TONGA
<b>ALB</b> ALBANIA	<b>CYP</b> CYPRUS	<b>JOR</b> JORDAN	<b>PAN</b> PANAMA	<b>TTO</b> TRINIDAD & TOBAGO
<b>AND</b> ANDORRA	<b>CZE</b> CZECH REPUBLIC	<b>JPN</b> JAPAN	<b>PCN</b> PITCAIRN ISLANDS	<b>TUN</b> TUNISIA
<b>ANT</b> NETHERLANDS ANTILLES	<b>DEU</b> GERMANY	<b>KAZ</b> KAZAKHSTAN	<b>PER</b> PERU	<b>TUR</b> TURKEY
<b>ARE</b> UNITED ARAB EMIRATES	<b>DJI</b> DJIBOUTI	<b>KEN</b> KENYA	<b>PHL</b> PHILIPPINES	<b>TUV</b> TUVALU
<b>ARG</b> ARGENTINA	<b>DMA</b> DOMINICA	<b>KGZ</b> KYRGYZSTAN	<b>PLW</b> PALAU	<b>TWN</b> TAIWAN
<b>ARM</b> ARMENIA	<b>DNK</b> DENMARK	<b>KHM</b> CAMBODIA	<b>PNG</b> PAPUA NEW GUINEA	<b>TZA</b> TANZANIA UNITED REPUBLIC OF
<b>ASM</b> AMERICAN SAMOA	<b>DOM</b> DOMINICAN REPUBLIC	<b>KIR</b> KIRIBATI	<b>POL</b> POLAND	<b>UGA</b> UGANDA
<b>ATA</b> ANTARCTICA	<b>DZA</b> ALGERIA	<b>KNA</b> ST KITTS AND NEVIS	<b>PRI</b> PUERTO RICO	<b>UKR</b> UKRAINE
<b>ATF</b> FRENCH SOUTHERN TERRITORIES	<b>ECU</b> ECUADOR	<b>KOR</b> KOREA REPUBLIC OF	<b>PRK</b> KOREA DEM PEOPLES REPUBLIC OF	<b>UMI</b> UNITED STATES MINOR OUTLYING
<b>ATG</b> ANTIGUA AND BARBUDA	<b>EGY</b> EGYPT	<b>KWT</b> KUWAIT	<b>PRT</b> PORTUGAL	<b>URY</b> URUGUAY
<b>AUS</b> AUSTRALIA	<b>ERI</b> ERITREA	<b>LAO</b> LAO PDR	<b>PRY</b> PARAGUAY	<b>USA</b> UNITED STATES OF AMERICA
<b>AUT</b> AUSTRIA	<b>ESH</b> WESTERN SAHARA	<b>LBN</b> LEBANON	<b>PSE</b> PALESTINIAN TERRITORY OCCUPIED	<b>UZB</b> UZBEKISTAN
<b>AZE</b> AZERBAIJAN	<b>ESP</b> SPAIN	<b>LBR</b> LIBERIA	<b>PYF</b> FRENCH POLYNESIA	<b>VAT</b> HOLY SEE (VATICAN CITY STATE)
<b>BDI</b> BURUNDI	<b>EST</b> ESTONIA	<b>LBY</b> LIBYAN ARAB JAMAHIRIYA	<b>QAT</b> QATAR	<b>VCT</b> ST VINCENT & THE GRENADINES
<b>BEL</b> BELGIUM	<b>ETH</b> ETHIOPIA	<b>LCA</b> ST LUCIA	<b>REU</b> REUNION	<b>VEN</b> VENEZUELA
<b>BEN</b> BENIN	<b>FIN</b> FINLAND	<b>LIE</b> LIECHTENSTEIN	<b>ROU</b> ROMANIA	<b>VGB</b> BRITISH VIRGIN ISLANDS
<b>BFA</b> BURKINA FASO	<b>FJI</b> FIJI	<b>LKA</b> SRI LANKA	<b>RUS</b> RUSSIAN FEDERATION	<b>VIR</b> US VIRGIN ISLANDS
<b>BGD</b> BANGLADESH	<b>FLK</b> FALKLAND ISLANDS (MALVINAS)	<b>LSO</b> LESOTHO	<b>RWA</b> RWANDA	<b>VNM</b> VIETNAM
<b>BGR</b> BULGARIA	<b>FRA</b> FRANCE	<b>LTU</b> LITHUANIA	<b>SAU</b> SAUDI ARABIA KINGDOM OF	<b>VUT</b> VANUATU
<b>BHR</b> BAHRAIN	<b>FRO</b> FAROE ISLANDS	<b>LUX</b> LUXEMBOURG	<b>SCG</b> SERBIA AND MONTENEGRO	<b>WLF</b> WALLIS AND FUTUNA
<b>BHS</b> BAHAMAS	<b>FSM</b> MICRONESIA	<b>LVA</b> LATVIA	<b>SDN</b> SUDAN	<b>WSM</b> SAMOA
<b>BIH</b> BOSNIA & HERZEGOVINA	<b>GAB</b> GABON	<b>MAC</b> MACAO	<b>SEN</b> SENEGAL	<b>YEM</b> YEMEN
<b>BLM</b> ST BARTHELEMY	<b>GBR</b> UNITED KINGDOM	<b>MAF</b> ST MARTIN	<b>SGP</b> SINGAPORE	<b>YMD</b> YEMEN DEMOCRATIC
<b>BLR</b> BELARUS	<b>GEO</b> GEORGIA	<b>MAR</b> MOROCCO	<b>SGS</b> STH GEORGIA & STH SANDWICH ISL	<b>YUG</b> YUGOSLAVIA SOCIALIST FED REP
<b>BLZ</b> BELIZE	<b>GGY</b> GUERNSEY	<b>MCO</b> MONACO	<b>SHN</b> ST HELENA	<b>ZAF</b> SOUTH AFRICA
<b>BMU</b> BERMUDA	<b>GHA</b> GHANA	<b>MDA</b> MOLDOVA REPUBLIC OF	<b>SJM</b> SVALBARD & JAN MAYEN	<b>ZAR</b> ZAIRE
<b>BOL</b> BOLIVIA	<b>GIB</b> GIBRALTAR	<b>MDG</b> MADAGASCAR	<b>SLB</b> SOLOMON ISLANDS	<b>ZMB</b> ZAMBIA
<b>BRA</b> BRAZIL	<b>GIN</b> GUINEA	<b>MDV</b> MALDIVES	<b>SLE</b> SIERRA LEONE	<b>ZWE</b> ZIMBABWE
<b>BRB</b> BARBADOS	<b>GLP</b> GUADELOUPE	<b>MEX</b> MEXICO	<b>SLV</b> EL SALVADOR	
<b>BRN</b> BRUNEI DARUSSALAM	<b>GMB</b> GAMBIA	<b>MHL</b> MARSHALL ISLANDS	<b>SMR</b> SAN MARINO	
<b>BTN</b> BHUTAN	<b>GNB</b> GUINEA-BISSAU	<b>MKD</b> MACEDONIA FORMER YUGOSLAV REP	<b>SOM</b> SOMALIA	
<b>BUR</b> BURMA	<b>GNQ</b> EQUATORIAL GUINEA	<b>MLI</b> MALI	<b>SPM</b> ST PIERRE AND MIQUELON	
<b>BVT</b> BOUVET ISLAND	<b>GRC</b> GREECE	<b>MLT</b> MALTA	<b>SRB</b> SERBIA	
<b>BWA</b> BOTSWANA	<b>GRD</b> GRENADA	<b>MMR</b> MYANMAR	<b>STP</b> SAO TOME AND PRINCIPE	
<b>BLR</b> BELARUS	<b>GRL</b> GREENLAND	<b>MNE</b> MONTENEGRO	<b>SUR</b> SURINAME	
<b>CAF</b> CENTRAL AFRICAN REPUBLIC	<b>GTM</b> GUATEMALA	<b>MNG</b> MONGOLIA	<b>SVK</b> SLOVAKIA	
<b>CAN</b> CANADA	<b>GUF</b> FRENCH GUIANA	<b>MNP</b> NORTHERN MARIANA ISLANDS	<b>SVN</b> SLOVENIA	
<b>CCK</b> COCOS (KEELING) ISLANDS	<b>GUM</b> GUAM	<b>MOZ</b> MOZAMBIQUE	<b>SWE</b> SWEDEN	
<b>CHE</b> SWITZERLAND	<b>GUY</b> GUYANA	<b>MRT</b> MAURITANIA	<b>SWZ</b> SWAZILAND	
<b>CHL</b> CHILE	<b>HKG</b> HONG KONG	<b>MSR</b> MONTSERRAT	<b>SYC</b> SEYCHELLES	
<b>CHN</b> CHINA	<b>HMD</b> HEARD AND MCDONALD ISLANDS	<b>MTQ</b> MARTINIQUE	<b>SYR</b> SYRIAN ARAB REPUBLIC	
<b>CIV</b> COTE D'IVOIRE	<b>HND</b> HONDURAS	<b>MUS</b> MAURITIUS	<b>TCA</b> TURKS AND CAICOS ISLANDS	
<b>CMR</b> CAMEROON	<b>HRV</b> CROATIA	<b>MWI</b> MALAWI	<b>TCD</b> CHAD	
<b>COD</b> CONGO DEMOCRATIC REPUBLIC OF	<b>HTI</b> HAITI	<b>MYS</b> MALAYSIA	<b>TGO</b> TOGO	
<b>COG</b> CONGO PEOPLES REPUBLIC OF	<b>HUN</b> HUNGARY	<b>MYT</b> MAYOTTE	<b>THA</b> THAILAND	
<b>COK</b> COOK ISLANDS	<b>IDN</b> INDONESIA	<b>NAM</b> NAMIBIA	<b>TJK</b> TAJIKISTAN	
<b>COL</b> COLOMBIA	<b>IMN</b> ISLE OF MAN	<b>NCL</b> NEW CALEDONIA	<b>TKL</b> TOKELAU	
<b>COM</b> COMOROS	<b>IND</b> INDIA	<b>NER</b> NIGER		
	<b>IOT</b> BRITISH INDIAN OCEAN TERRITORY	<b>NFK</b> NORFOLK ISLAND		
	<b>IRL</b> IRELAND	<b>NGA</b> NIGERIA		
	<b>IRN</b> IRAN ISLAMIC REPUBLIC OF	<b>NIC</b> NICARAGUA		
	<b>IRQ</b> IRAQ	<b>NIU</b> NIUE		
	<b>ISL</b> ICELAND	<b>NLD</b> NETHERLANDS		
		<b>NOR</b> NORWAY		